

SWAN d

Installation - Commissioning - Maintenance

20230502

Accessories

Commissioning box:

SWAN T: Made of galvanised sheet steel. The commissioning box contains a commissioning damper and fixed measurement tapping. The box is supplied with a connection in the long side (L).

Sound-absorbing material

Accessory for the commissioning box: Sound absorbing material with reinforced surface layer. Fire resistance rated to B-s1,d0 in accordance with EN ISO 11925-2.

Installation

The commissioning box should be suspended by means of hangers from the ceiling. The box is equipped with mounting fastening points, see Figure 2. Secure the diffuser face to the commissioning box with screws through the crosspieces in the commissioning box as shown in Figure 3.

Commissioning

Commissioning should be carried out with the diffuser face mounted. Pull the measuring tubes and damper-adjustment cords out of the air diffuser through the slots, blue measuring tube for supply air and transparent tube for extract air, see Figure 1. When you have finished measuring the air pressure and have determined the appropriate damper position, stretch both damper-adjustment cords and tie them together in a so-called commissioning knot.

K-factors are specified in the relevant commissioning instructions at www.swegon.com.

Maintenance

Clean the air diffuser if needed with lukewarm water and dishwashing detergent added. Or use a vacuum cleaner with a brush nozzle for cleaning. The duct system can be accessed after removing the diffuser face and the damper assembly, see Figures 1 and 3.

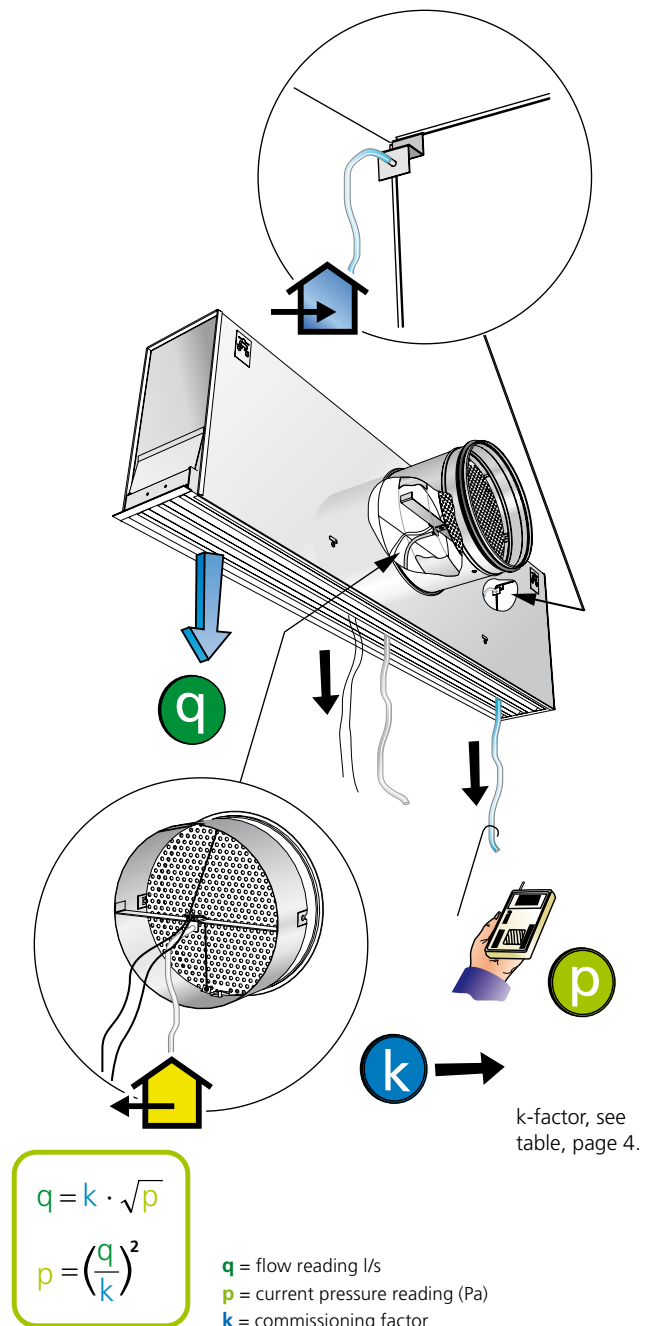


Figure 1. Commissioning and location of the measurement tapping.

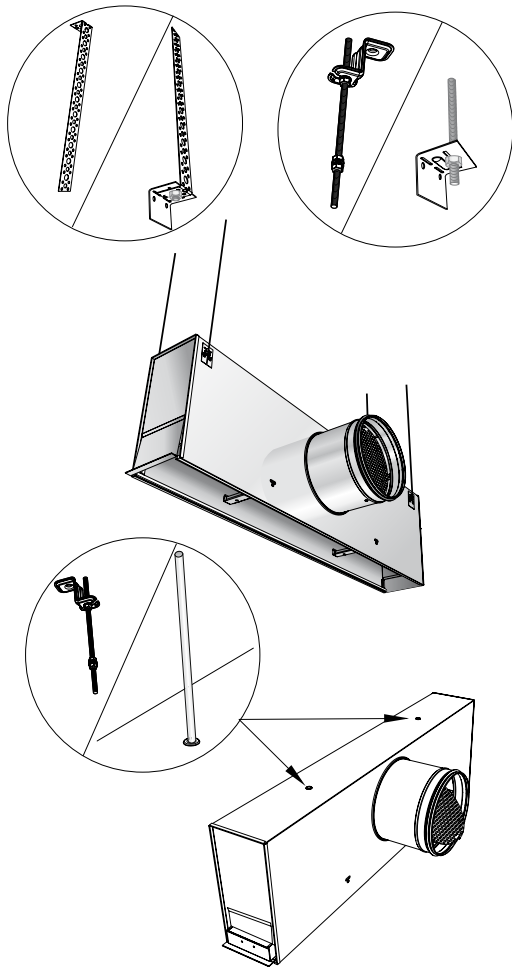


Figure 2. Alternative installation with threaded rods, mounting strips or wire.

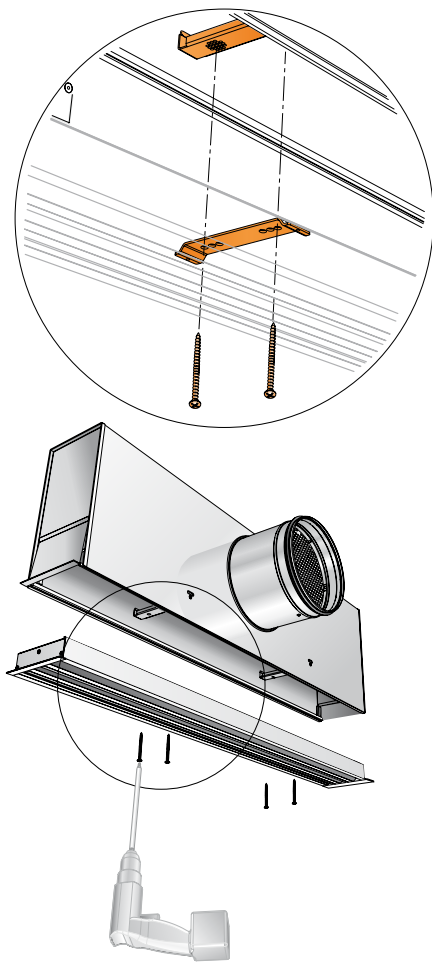


Figure 3. To install the SWAN in the SWAN T.

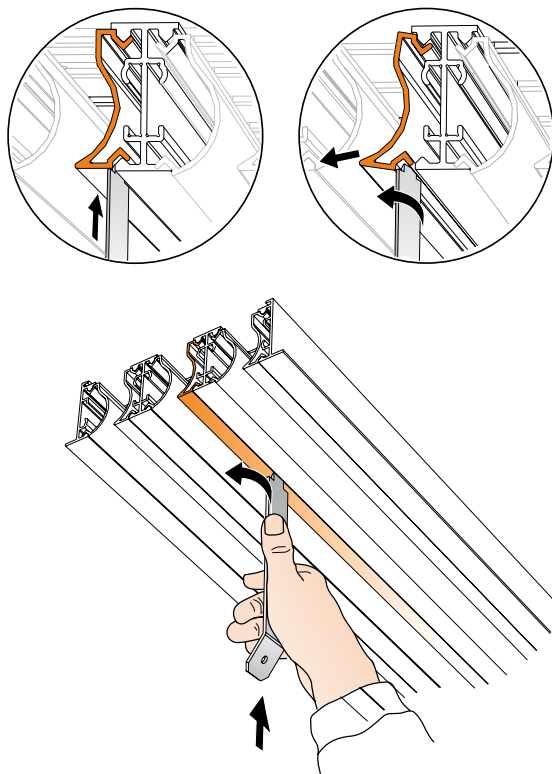


Figure 4a. To dismantle the air deflectors.

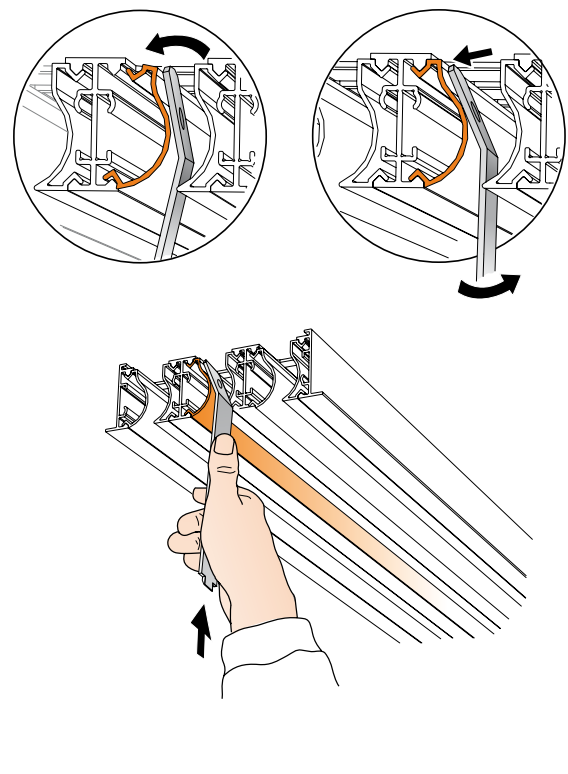


Figure 4b. To install the air deflectors.

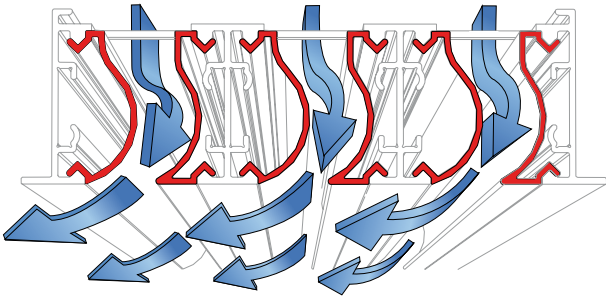


Figure 5a. 1-way air discharge.

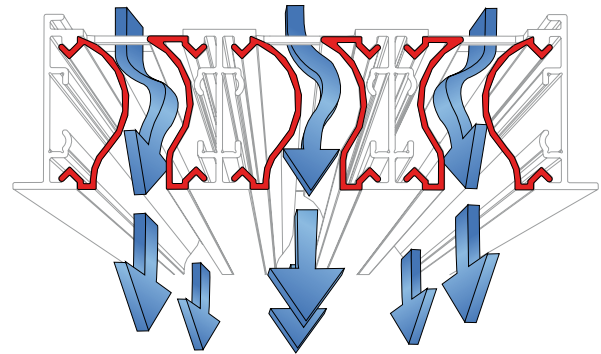


Figure 5c. Vertical air discharge.

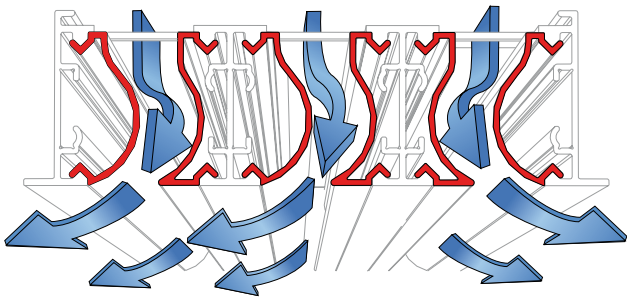


Figure 5b. 2-way air discharge.

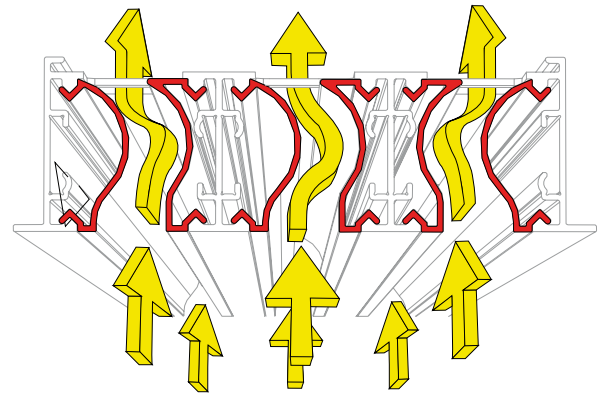


Figure 5d. Extract air.

Dimensions and weights

SWAN standard including SWAN T commissioning box

Size	A	B	ØD	H - (H+25)	J	K	L	Weight, kg
2-1200-160	1190	107	159	265-290	124	1151	146	7.2
2-1200-200	1190	107	199	304-329	124	1151	166	7.9
2-1200-250	1190	107	249	354-379	124	1151	194	8.9
3-1200-160	1190	153	159	265-290	170	1151	146	8.8
3-1200-200	1190	153	199	304-329	170	1151	166	9.4
3-1200-250	1190	153	249	354-379	170	1151	194	10.3
4-1200-160	1190	198	159	265-290	215	1151	146	10.1
4-1200-200	1190	198	199	304-329	215	1151	166	10.8
4-1200-250	1190	198	249	354-379	215	1151	194	11.8

Size of the opening: A-20, B-12

K-factor (COP)

Size	1-way	2-way	Vertical	Extract Air
2-1200 + SWAN Ta 2-160	21	21	18,8	13
2-1200 + SWAN Ta 2-200	22,4	22,4	19,8	16,6
2-1200 + SWAN Ta 2-250	23,4	23,4	19,8	18,7
3-1200 + SWAN Ta 3-160	27,1	-	24,9	15,8
3-1200 + SWAN Ta 3-200	29,4	-	25,8	19,3
3-1200 + SWAN Ta 3-250	32,2	-	25,8	22,8
4-1200 + SWAN Ta 4-160	27,6	27,6	25,1	16,7
4-1200 + SWAN Ta 4-200	35,4	35,4	30,8	22,5
4-1200 + SWAN Ta 4-250	39	39	34,2	29,1

Supply air: 1 measuring tube (blue).
Extract air: 1 measuring tube (transparent).

SWAN T – Position of the duct connection

SWAN T	P	R	S
Ø160	102	22	163
Ø200	122	22	182
Ø250	147	22	207

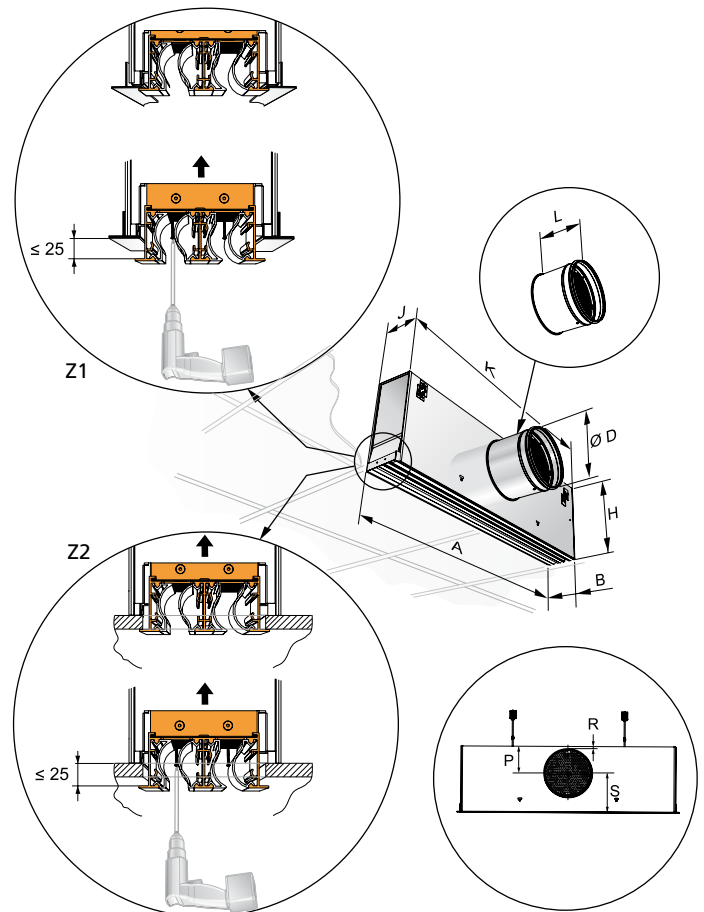


Figure 6. SWAN with SWAN T commissioning damper.