

FALCON High Flow a

Installation – Commissioning – Maintenance

20191101

Installation

Secure the inlet spigot to the connecting duct using blind rivets. Recommended distance between blind rivets is 100 mm. Corresponds to following: 9 blind rivets - size 315, 12 blind rivets - size 400, 15 blind rivets - size 500.

Electrical operation

Wiring of the air diffuser's motor should be performed by qualified staff. See wiring diagram on page 2.

Commissioning

For commissioning and measurement of airflow a measurement damper before the air diffuser is recommended.

Operating modes

The product is delivered with the outlet cone in horizontal mode. Chose horizontal mode for cooling of the room. Chose vertical mode for heating of the room. See figure 3 for spread modes.

Maintenance

The air diffuser can be cleaned, if necessary, using lukewarm water with dishwashing detergent added or by vacuum cleaning using a brush nozzle.

Dimensions and weights

FALCON HF

Size	ØA	ØB	C	D	E	ØF	ØG	ØH	ØI	ØJ	Weight (kg)
315	591	314	44	110	340	514	631	671	711	561	10,5
400	703	399	44	122	350	616	743	783	823	673	13
500*	853	499	40	135	460	765	893	933	973	823	18

*Size 500 is delivered without a rubber seal ring.

Size of the opening = ØJ

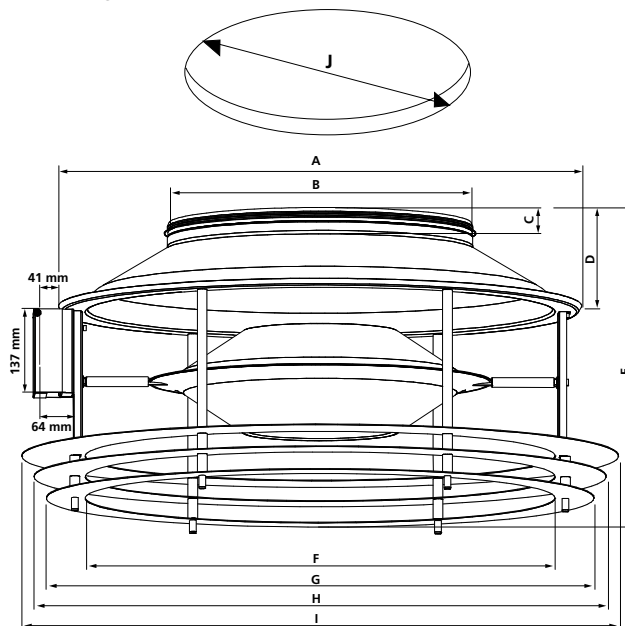


Figure 1. FALCON HF, dimensions.

Wiring Diagram

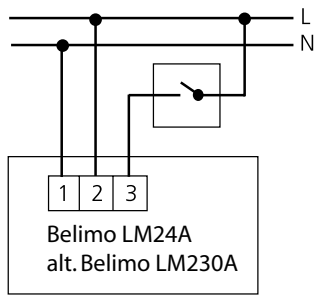


Figure 2. Wiring diagram for FALCON HF, motor control with 2 point regulation. Switch is not included.

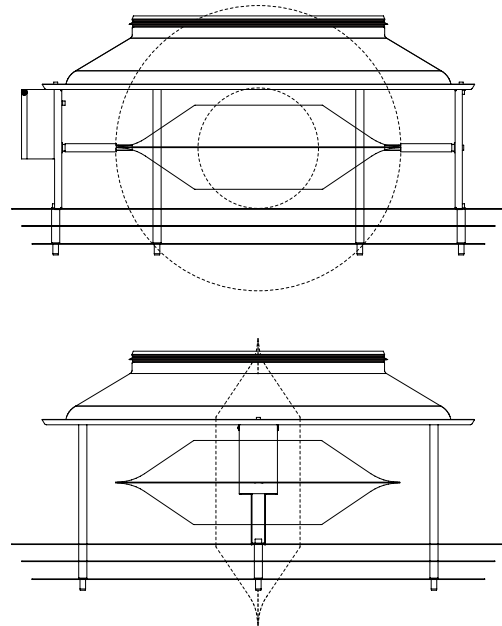


Figure 4. FALCON HF, spread modes. Solid outlet cone = horizontal spread mode. Dashed outlet cone = vertical spread mode.

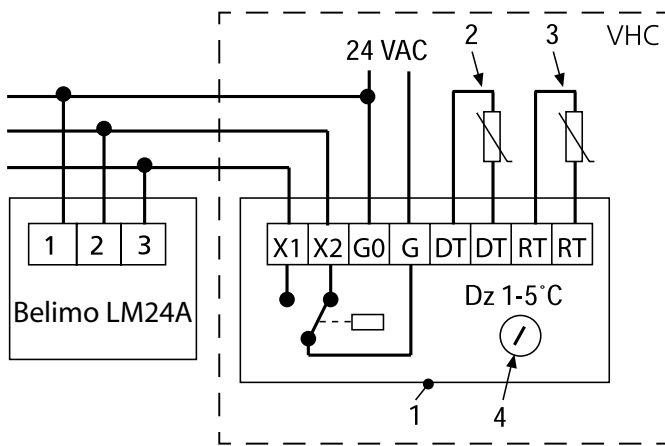


Figure 3. The wiring diagram shows the connections between the Belimos damper motor and the VHC. NOTE! Only available with 24 V AC supply voltage.

Explanation to figure 3.

- 1 = Control unit VHC
- 2 = Duct temperature sensor (DT)
- 3 = Room temperature sensor (RT)
- 4 = Setting the switch-over temperature

Motor features

Motor	Supply voltage	Power consumption	Running time / Torque
LM24A ^{*)}	24 V AC 50/60 Hz 24 V DC	2 VA	150 s / 5 Nm
LM230A ^{**)}	AC 100..240V 50/60 Hz	4 VA	150 s / 5 Nm

^{*)} Standard, stocked motor, can be connected to VHC controller.

^{**)} Non-stocked motor.