

EXF_d

Installation - Commissioning - Maintenance

20220217

Accessories

Mounting frame, EXFT1

Mounting frame for insertion mounting.

Mounting frame EXFT5

Mounting frame for fit-on mounting.

Assembly

Size of opening, see the dimensions of the connecting duct. Install the mounting frame by inserting its nipple into the connecting duct. Press the spring fasteners of the extract air valve into the grooves of the mounting frame as shown in Figure 1.

Commissioning

Rotate the inner cone clockwise (-) to increase the pressure drop and counterclockwise (+) to decrease it. Lock the position of the cone by tightening the lock nut on the rear side of the extract air valve.

The extract air valve can be commissioned by measuring the pressure or the air flow. For pressure measurement, use a so-called "measuring hook" (probe) and for air flow measurement use a commonly marketed airflow meter. See Figures 2 and 3.

The rated coefficient of performance (K-factor) is specified on the identification label of the product and in the relevant commissioning instructions at www.swegon.com.

Maintenance

The extract air valve can be cleaned, if necessary, using lukewarm water with dishwashing detergent added or by vacuum cleaning using a brush nozzle. The duct system can be reached for cleaning by withdrawing the extract air valve out of its mounting frame.

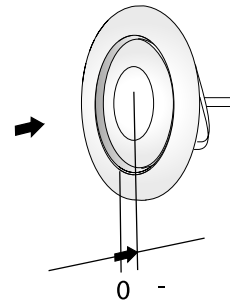
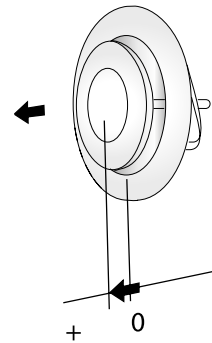


Figure 2. Commissioning.

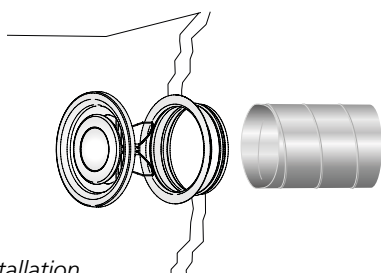
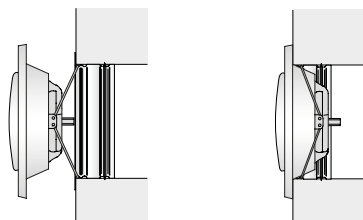


Figure 1. Installation.

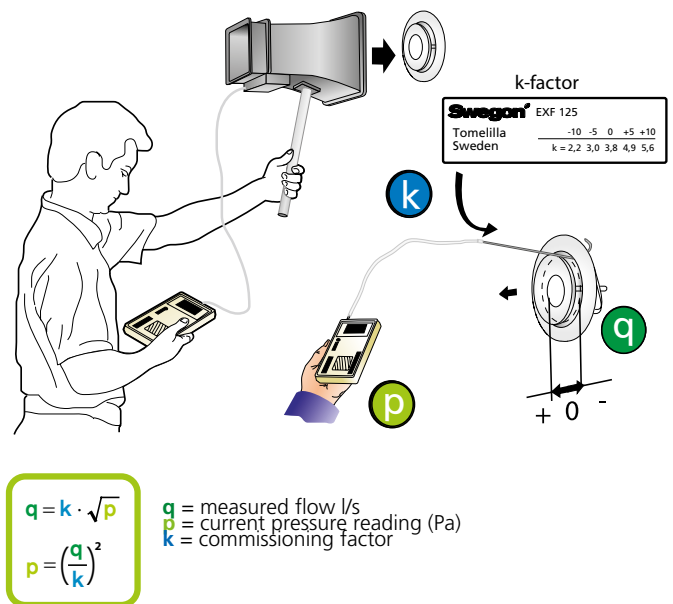


Figure 3. Commissioning.

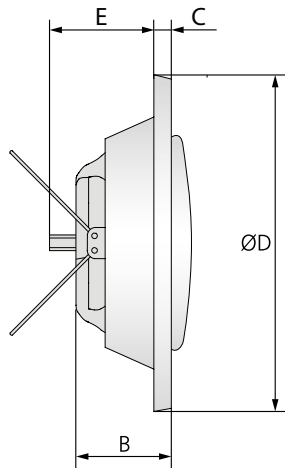
Dimensions and weights

K-factor^{*)} EXF

EXF

Size	B	C	ØD	E	Weight, g
100	41	9	132	69	162
125	50	10	162	72	237
160	55	10	192	80	334

Cone position	Size		
	100	125	160
-15	0.6	1.4	2.0
-10	1.1	2.2	3.1
-5	1.7	3.0	4.0
0	2.2	3.8	4.9
5	2.8	4.9	5.9
10	3.3	5.6	6.8
15	4.5	6.1	7.8



*) Measure with a test probe

Figure 4. Extract air valve, EXF.

Mounting frame, EXFT1, for insertion mounting/ EXFT5, for fit-on mounting

Size	ØA	ØD1	ØD2	Size of opening*	Weight, g	
					EXFT1	EXFT5
100	123	99	100	110	78	72
125	149	124	125	135	97	92
160	185	159	160	170	123	118

*Tolerance +5 /-0 mm

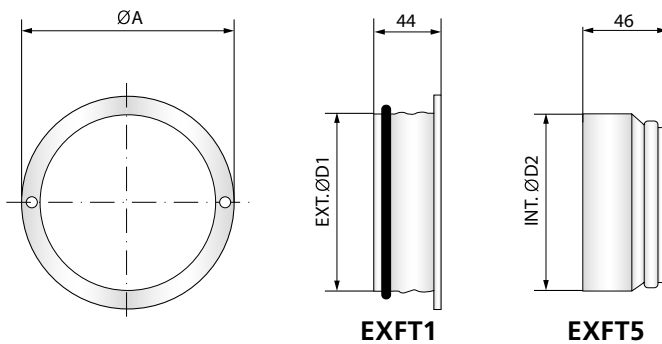


Figure 5. Mounting frame, EXFT1/EXFT5.