

DVC_e

Installation – Commissioning – Maintenance

20130915 Art. No. 1545192

Accessory

Regulator unit:

REG. Combination unit with damper and sound attenuator.

Duct Cover:

DVCT 1. For enclosure of the regulator unit and the spiral connection duct.

Base:

DVCT 2. For installation of the air diffuser on a floor.

Decorative top:

DVCT 3. Removable top board in different materials and dimensions. Can be used when duct cover is not utilized. Please contact your nearest sales representative for further information.

Installation

Secure the air diffuser to the wall with screws using the angle brackets supplied with the diffuser. Screw the base into place on the bottom of the unit. Secure the telescopic duct cover with screws into place on the wall using the wall mounting brackets supplied. The aluminium side strips are used for concealing the screws.

The regulator has a circular connection spigot with a rubber seal. Press the spigot into the inlet socket of the terminal. See Figure 1.

Commissioning

The measurement tapping is positioned on the one side of the air diffuser behind the aluminium strip. The K-factor (COP) is given on the product identification label on the diffuser to the side of the measurement tapping. Swegon recommends that you use the REG regulator unit for adjusting the airflow. See Figure 2.

To regulate how the air is supplied to the room, turn the air diffuser's Varizon® discs to make the air to flow in the desired direction. A straight air discharge can be achieved by taking the disc out of the diffuser, turning it 180° and reinserting it back into place. See Figure 3.

Maintenance

The air diffuser can be cleaned, if necessary, using luke-warm water with dishwashing detergent added or by vacuum cleaning using a brush nozzle. The duct system can be accessed by removing the front panel and the inspection cover of the air distribution panel. See Figure 2.

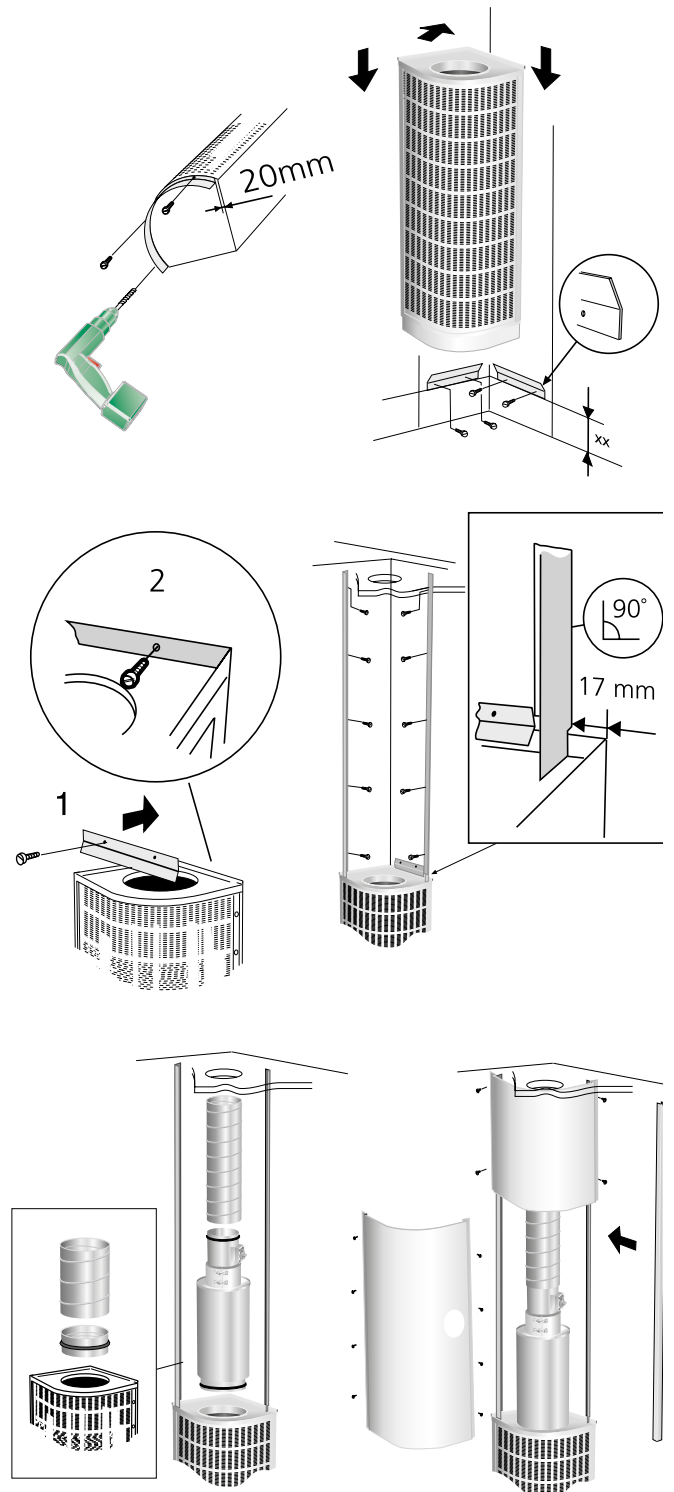
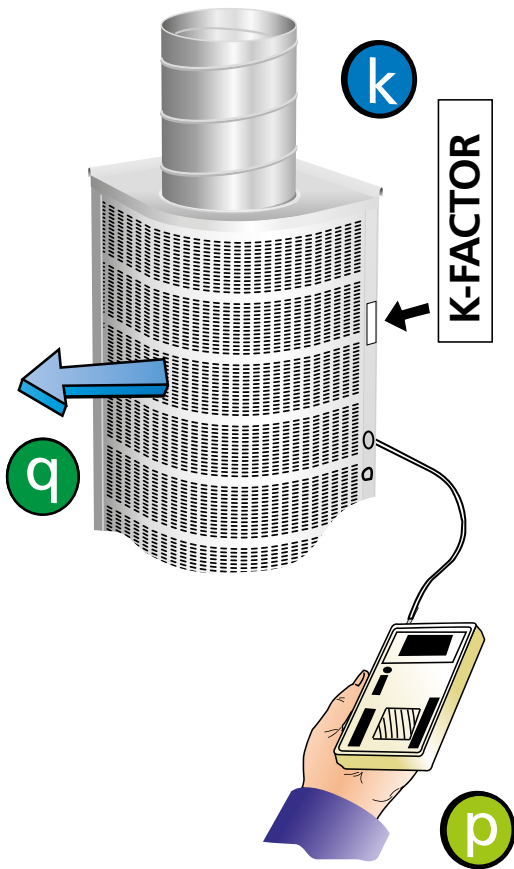
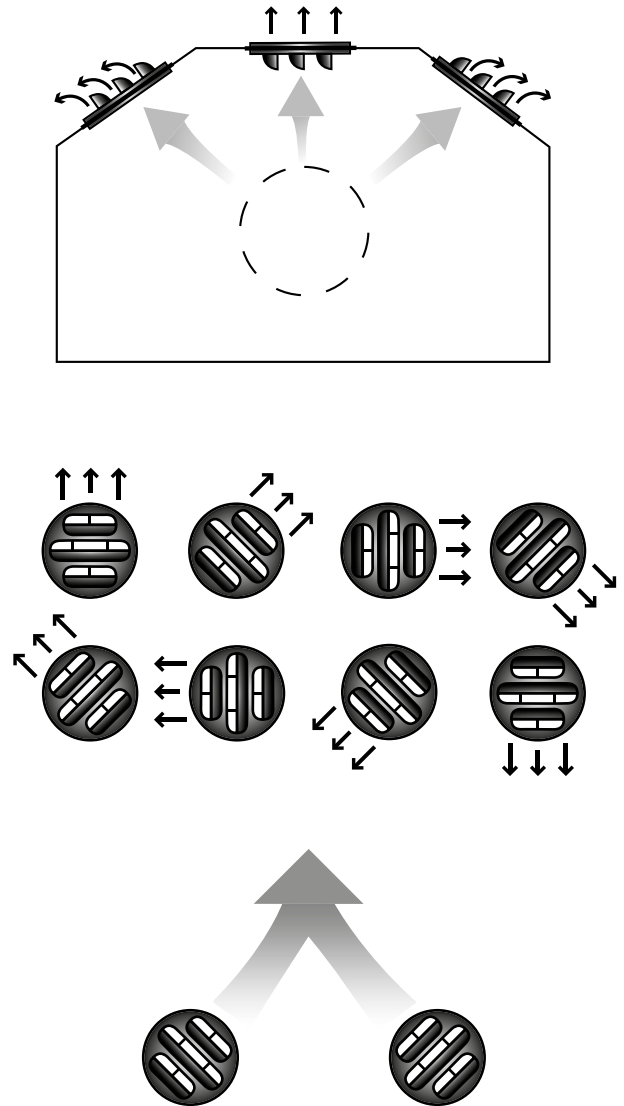


Figure 1. Installation.



Disc setting – Varizon®



$$q = k \cdot \sqrt{p}$$

$$p = \left(\frac{q}{k}\right)^2$$

q = flow reading l/s
p = current pressure reading (Pa)
k = commissioning factor

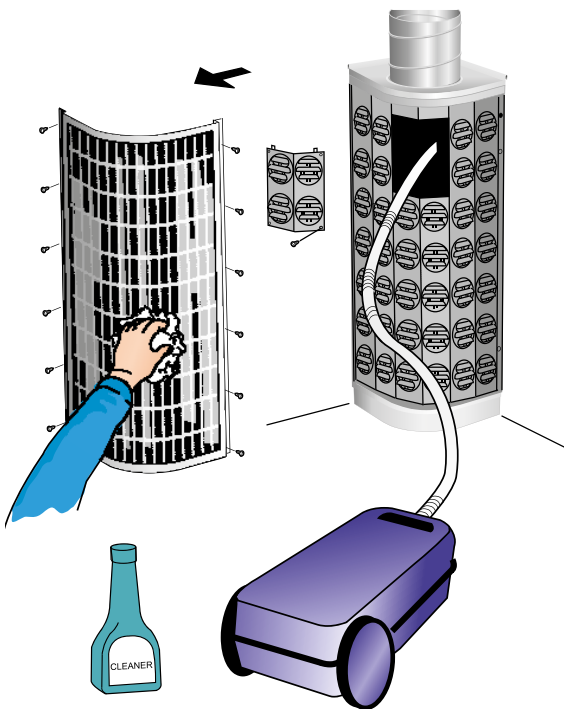


Figure 3. Disc adjustment, schematic presentation.

Figure 2. Commissioning, Maintenance.

Dimensions and weights

DVC	Dimensions (mm)				Weight (kg)
	A	B	ØD	G	
125	245	623	125	123	5
160	280	623	160	140	7
200	320	923	200	160	14
250	370	923	250	185	18
315	435	1523	315	218	23
400	520	2003	400	260	31

REG	Dimensions (mm)			
	ØC	Ød	G	H
125	225	124	230	500
160	260	159	230	500
200	300	199	230	500
250	350	249	250	500
315	415	314	260	800
400	500	399	300	800

K-factor (COP)

Size	Supply air
125	12.0
160	20.0
200	33.0
250	50.0
315	84.0
400	134.0

Number of measuring tubes: 1

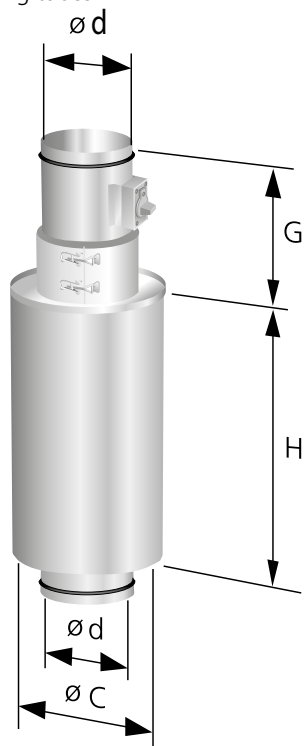


Figure 3. REG regulator unit.

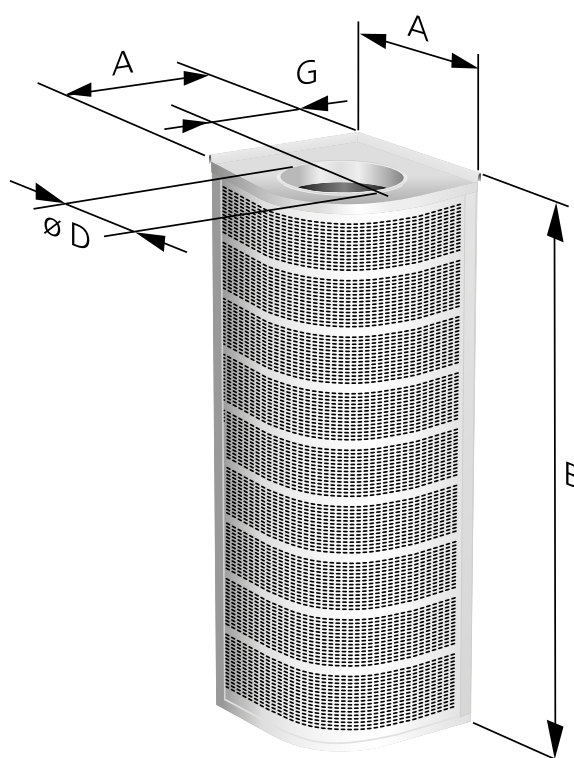


Figure 4. DVC.

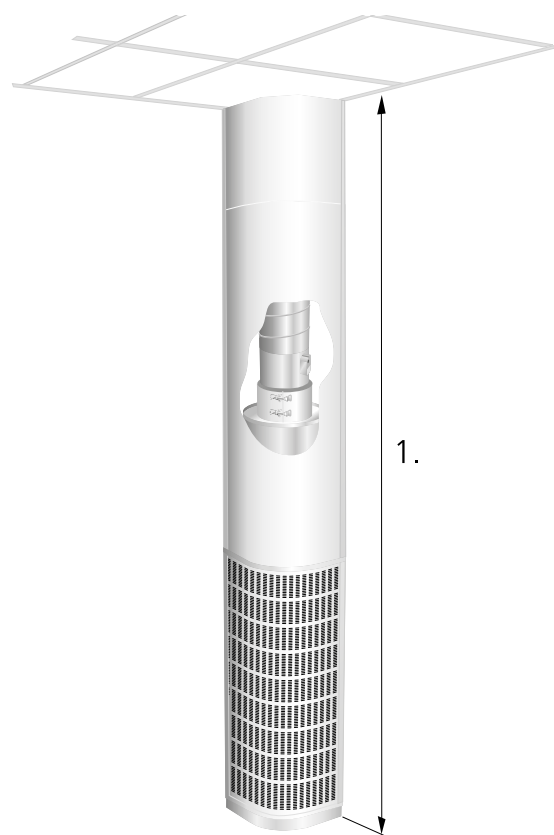


Figure 5. DVC with duct cover and base.

1. Size 400: 2850-3200. Sizes 125-315: 2400-2750