

# DHCE

Installation – Commissioning – Maintenance

20230508  
Art. 1545190

## Accessories

### Regulator unit:

REG. Combination unit with damper and sound attenuator.

### Duct cover:

DHCT 1. For incorporation of the regulator unit and the connected spiral duct.

### Base:

DHCT 2. For mounting the air diffuser on the floor.

### Decorative top:

DHCT 3. Removable top board in different materials and dimensions. Can be used when duct cover is not utilized. Please contact your nearest sales representative for further information.

## Installation

Secure the air diffuser with screws to the wall using angle brackets supplied with the diffuser. Screw the base into place on the bottom of the unit. Secure the telescopic duct cover with screws to the wall using the wall mounting rails. Conceal the screws with aluminium lateral strips. Press the regulator unit, which has a circular connection spigot with a rubber seal, into the inlet socket of the air diffuser. See Figure 1.

## Commissioning

The measurement tapping is positioned on the one side of the air diffuser behind the aluminium strip. The K-factor (COP) is given on the product identification label on the diffuser to the side of the measurement tapping. K-factors can also be found in the relevant commissioning instructions at [www.swegon.com](http://www.swegon.com). We recommend that you use the REG regulator unit for adjusting the airflow. See Figure 2.

To regulate how the air is supplied to the room, turn the air diffuser's Varizon® nozzles to make the air to flow in the desired direction. A straight air discharge can be achieved by taking the nozzle out of the diffuser, turning it 180° and reinserting it back into place. See Figure 4.

## Maintenance

The air diffuser can be cleaned, if necessary, using lukewarm water with dishwashing detergent added or by vacuum cleaning using a brush nozzle. The duct system is accessed by removing the front panel and the inspection cover of the air distribution panel. See Figure 2.

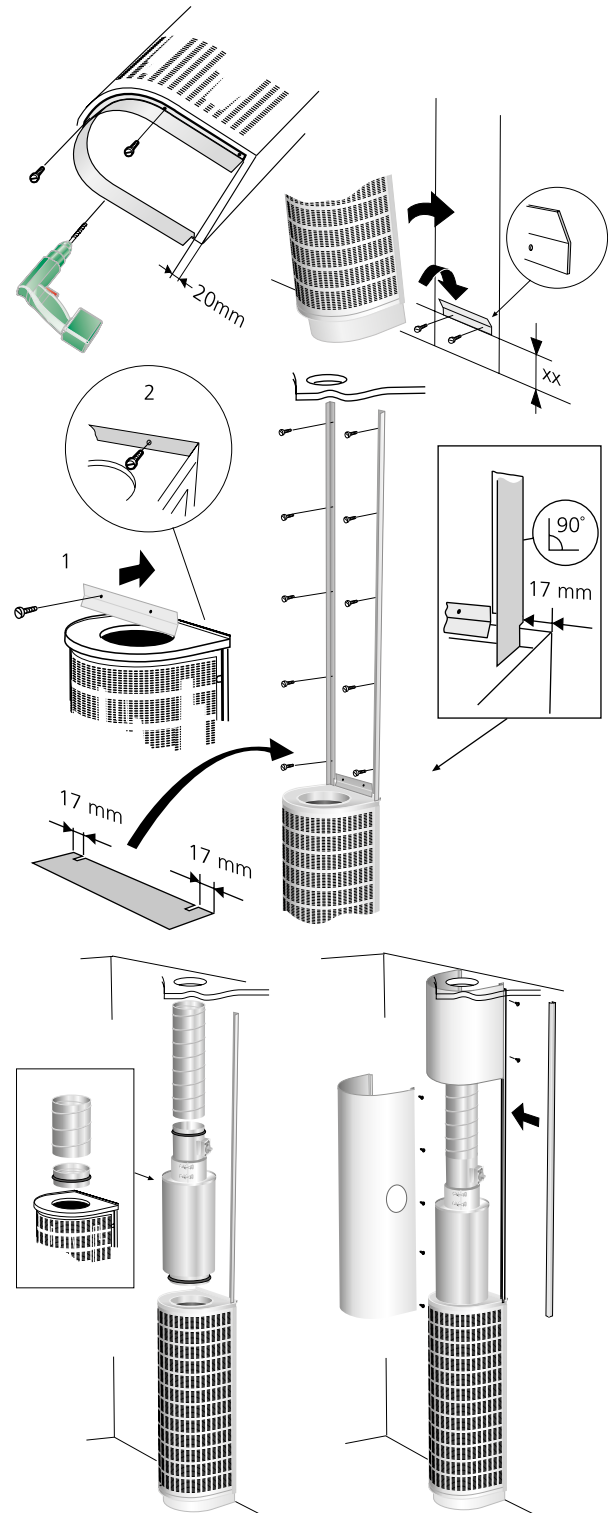
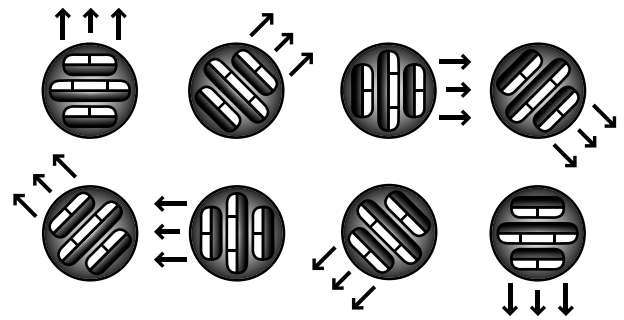
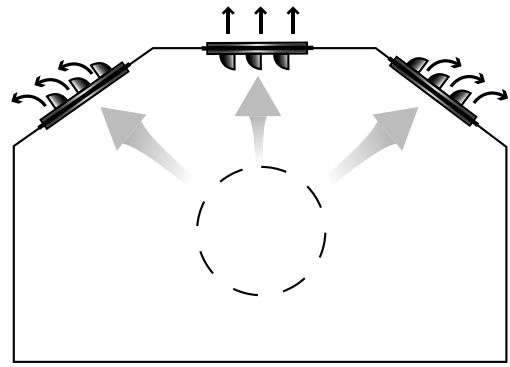
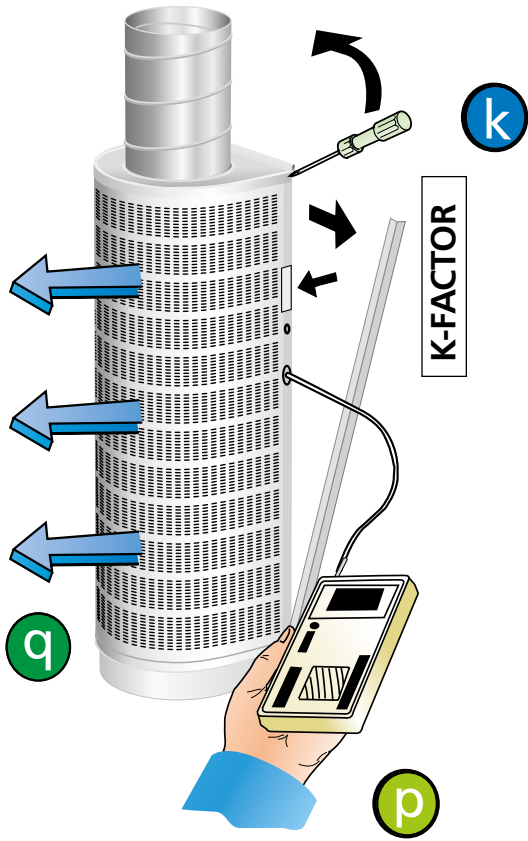


Figure 1. Installation.

### Nozzle adjustment – Varizon®



$$q = k \cdot \sqrt{p}$$

$$p = \left(\frac{q}{k}\right)^2$$

q = flow reading l/s  
 p = current pressure reading (Pa)  
 k = commissioning factor

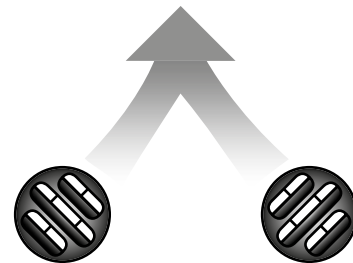


Figure 3. Nozzle adjustment, schematic presentation

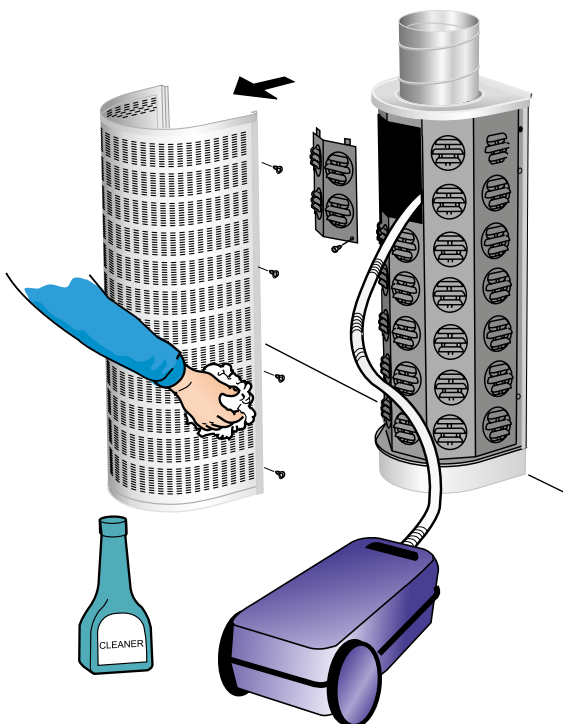


Figure 2. Commissioning, Maintenance.

# Dimensions and weights

## DHC

Size	Dimensions (mm)					Weight (kg)
	A	B	C	ØD	G	
125	245	623	250	125	123	7
160	280	623	285	160	140	10
200	320	923	325	200	160	15
250	370	923	375	250	185	18
315	435	1523	435	315	218	23
400	520	2003	525	400	260	29
500	620	2003	620	500	310	36
630	750	2003	750	630	375	45
800	920	2003	920	800	460	56

## REG

Size	Dimensions (mm)			
	ØC	Ød	G	H
125	225	124	230	500
160	260	159	230	500
200	300	199	230	500
250	350	249	250	500
315	415	314	260	800
400	500	399	300	800
500	600	499	300	900
630	730	629	300	900

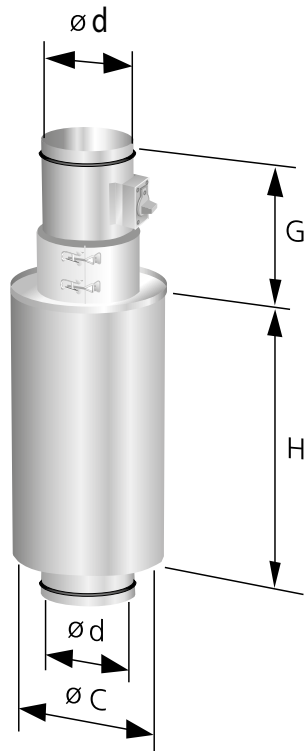


Figure 4. Regulator unit, REG.

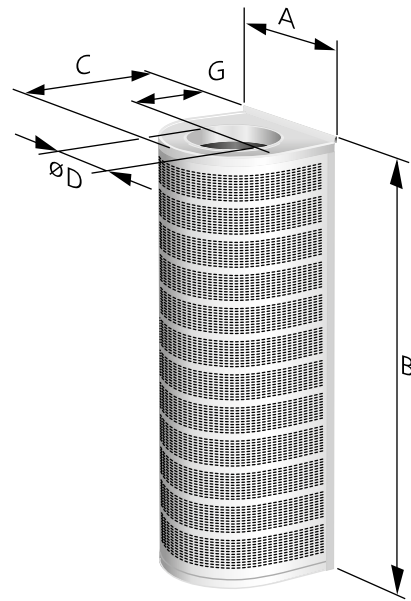


Figure 5. DHC.

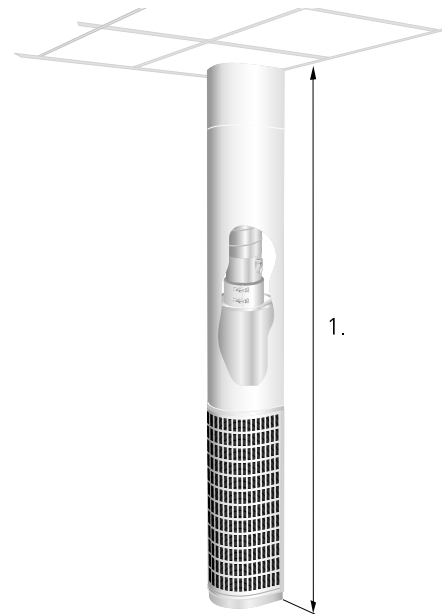


Figure 6. DHC with duct cover and base.

1. Sizes 125-315: 2400-2750.

Size 400-800: 2850-3200.

If other lengths are required always state the total room height.

## K-factor (COP)

Size	Supply air
125	12.0
160	20.0
200	33.0
250	50.0
315	84.0
400	134.0
500	202.0
630	285.0
800	520.0

Number of measuring tubes: 1